

# Urinary iron

*by* Ina S Timan

---

**Submission date:** 30-Jan-2023 11:00AM (UTC+0700)

**Submission ID:** 2002129726

**File name:** Urinary\_iron.pdf (702.88K)

**Word count:** 3754

**Character count:** 19363



Contents lists available at ScienceDirect

## Blood Cells, Molecules and Diseases

journal homepage: [www.elsevier.com/locate/bcmd](http://www.elsevier.com/locate/bcmd)



# 1 Urinary iron excretion for evaluating iron chelation efficacy in children with thalassemia major



3 Pustika A. Wahidiyat<sup>a,\*</sup>, Ellen Wijaya<sup>a</sup>, Soedjatmiko Soedjatmiko<sup>a</sup>, Ina S. Timan<sup>b</sup>,  
Vasili Berdoukas<sup>c</sup>, Mikhael Yosia<sup>a</sup>

<sup>a</sup> Department of Child Health, Faculty of Medicine, Universitas Indonesia – Dr. Cipto Mangunkusumo Hospital, Jakarta, Indonesia

<sup>b</sup> Department of Clinical Pathology, Faculty of Medicine, Universitas Indonesia – Dr. Cipto Mangunkusumo Hospital, Jakarta, Indonesia

<sup>c</sup> University of Southern California, Keck School of Medicine Children's Hospital, Los Angeles, USA

### ARTICLE INFO

Editor: Mohandas Narla

#### Keywords:

Urinary iron examination  
Iron chelation therapy  
Thalassemia major  
Iron overload

### ABSTRACT

**Background:** In patients with thalassemia major, examination routinely used for the evaluation of iron load in Indonesia is serum ferritin, but it is strongly influenced by other factors such as infections, inflammation and vitamin C levels. Evaluation of urinary iron excretion is an important and easy method to indicate iron chelation efficacy.

**Objective:** To determine the efficacy of iron chelation therapy by urinary iron examination and to evaluate its correlation with the time of transfusion, serum ferritin level, transferrin saturation and T2\* MRI.

**Methods:** Prospective cohort study was conducted in children with thalassemia major aged 7– < 18 years old who received DFP therapy. Twenty-four-hour urine collections were examined through inductively coupled plasma – mass spectrometry (ICP-MS). Patient's serum ferritin, transferrin saturation, peripheral blood, differential count and T2\* MRI was documented during the study. Data analysis is based on urine iron level, body iron balance and the correlation between urine iron level, serum ferritin, transferrin saturation and T2\* MRI and dosage of DFP.

**Results:** Thirty (55%) subjects showed a higher urine iron level on the day prior to transfusion (mean: 12,828 SD ± 12,801 µg/24 h) in comparison to post transfusion (mean: 10,985 SD ± 10,023 µg/24 h). All subjects had positive iron balance (mean 524 SD ± 230 mg). There were positive correlation between urine iron level and transferrin saturation ( $r = 0.559$ ,  $p = 0.01$ ) and serum ferritin ( $r = 0.291$ ,  $p = 0.03$ ), no correlation found with T2\* MRI results.

**Conclusions:** There is a relationship to urinary iron excretion in response to chelation therapy and the degree of iron load.

## 1. Introduction

Correct and timely assessment on chelation efficacy is paramount for the adequate therapy of patients with chronic transfusion-dependent iron overload. MRI measurements of liver and cardiac iron concentration are the gold standards for assessment of tissue iron concentration but they are expensive and of limited availability [1–3]. Assessment of serum ferritin values is easily available but has limitations in providing information on the liver or cardiac iron load in individual cases due to factors such as inflammation, liver disorders, hemolysis, ineffective erythropoiesis and vitamin C level. In addition, changes in its values in transfusion-dependent patients are commonly slow and patients are frequently discouraged with their iron chelation

therapy by the lack of significant reductions in values [4–6]. Urinary iron excretion is easily performed and provides useful indication as to whether therapy with chelators that promote significant iron excretion through the kidneys is efficacious in promoting negative iron balance. Most of the studies on urinary iron excretion have been conducted with deferoxamine and limited data are available on the factors that affect iron excretion during deferiprone therapy [7–10]. The current study was conducted to determine the extent of urinary iron excretion during deferiprone therapy and factors that may impact their values in patients with thalassemia major (TM).

\* Corresponding author.

E-mail address: [pa.wahidiyat@gmail.com](mailto:pa.wahidiyat@gmail.com) (P.A. Wahidiyat).

<https://doi.org/10.1016/j.bcmd.2019.03.007>

Received 12 December 2018; Received in revised form 25 March 2019; Accepted 25 March 2019

Available online 01 April 2019

1079-9796/ © 2019 Elsevier Inc. All rights reserved.

**Table 1**  
Characteristic of subjects.

Characteristic	n = 55
Gender (boys/girls)	29/25
Age, mean (SD, range) years	12.38 (2.84, 7–17)
Transfusion duration, mean (SD, range) years	9.39 (3.5, 2–16)
Duration of DFP administration, mean (SD, range) years	6.69 (3.35, 1–12)
Nutritional status (n)	
Good nutrition	28
Under nutrition	22
Malnutrition	5
Transfusion 6 months prior to study, mean (SD, range) mL/kg	119.8 (25.3, 49.19–209.56)
Serum ferritin, mean (SD, range) ng/mL	3637.15 (1983.67, 2700–9667)
Transferrin saturation, mean (SD, range) %	82.69 (14.27, 38–100)
Hemoglobin pre-transfusion, mean (SD, range) g/dL	8.3 (0.7, 7.2–10.1)
Hemoglobin post-transfusion, mean (SD, range) g/dL	11.4 (0.8, 9.4–13.8)

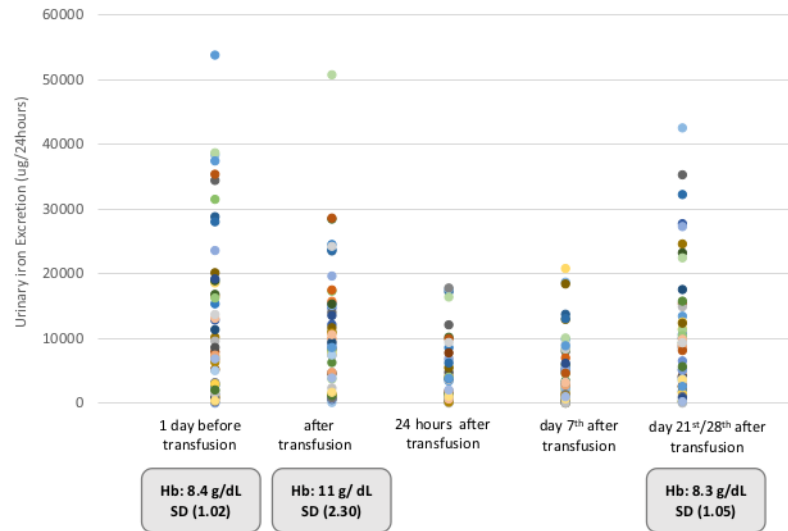
**Table 2**  
Results of cardiac, liver and pancreas T2\* MRI.

Variable	N
Cardiac MRI T2*	n = 55
> 20 ms, n (%)	52 (94.5%)
> 10–20 ms, n (%)	3 (5.5%)
8–10 ms, n (%)	0 (0%)
< 8 ms, n (%)	0 (0%)
Mean (SD, range) ms	32.9 (6.77, 15.78–50.91)
Liver MRI T2*	n = 55
> 6.3 ms, n (%)	4 (7.3%)
> 2.4–6.3 ms, n (%)	23 (41.8%)
1.4–2.4 ms, n (%)	17 (30.9%)
< 1.4 ms, n (%)	11 (20%)
Mean (SD, range) ms	3.19 (3.66, 0.83–24.98)
Pancreas MRI R2*	n = 55
< 30 ms, n (%)	11 (20%)
30–100 ms, n (%)	31 (56.4%)
> 100–400 ms, n (%)	13 (23.6%)
> 400 ms, n (%)	0 (0%)
Mean (SD, range) ms	69.55 (55.63, 16.3–212.3)

**2. Methods**

Fifty-five TM children at the Thalassemia Center at Dr. Cipto Mangkusumo Hospital, Jakarta, Indonesia were included in the study. All subjects were on a regular blood transfusion regimen, on iron chelation therapy (ICT) with deferoxamine (DFP) at  $\geq 75$  mg/kg/day for at least 1 year and had serum ferritin levels  $> 2500$  ng/mL on at least two consecutive assessments or transferrin saturation above 60%. Patients were excluded in the study if they have impaired kidney function (as evidenced by glomerular filtration rate  $< 90$  mL/min/1.73 m<sup>2</sup>), hepatic impairment (active hepatitis confirmed by serological tests, jaundice, ascites, or increase in AST or ALT  $> 4$  times the normal upper limit).

Urinary iron examination was evaluated using Inductively Coupled Plasma - Mass Spectrometry (ICP-MS) with 24-hour urine sample. Serial urinary iron examinations were done on the day prior to transfusion, the transfusion day, the day after transfusion, the seventh day after transfusion and before the next transfusion. Hemoglobin level was examined before and after transfusion. Serum ferritin and transferrin saturation were evaluated using colorimetric enzyme-linked immunoassay. The cardiac, liver and pancreas iron load was determined



**Fig. 1.** Urinary iron excretion by the time of transfusion (level of hemoglobin).

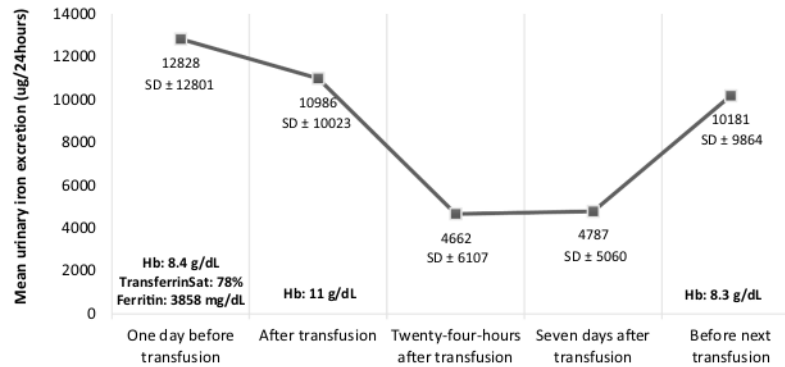


Fig. 2. Mean urinary iron excretion by the time of transfusion (level of hemoglobin).

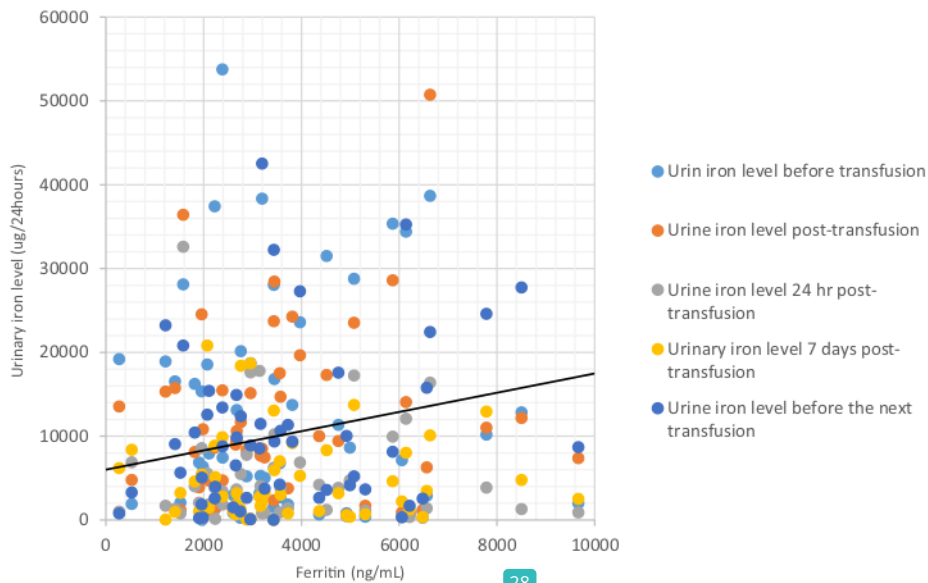


Fig. 3. Correlation between urinary iron excretion and serum ferritin ( $r = 0.291$ ,  $p = 0.03$ ).

by T2\* MRI (Siemens® MAGNETOM Avanto 1.5 T, total imaging matrix (TIM) 76 × 18 and analysed using CMRtools™). Serum ferritin and MRI assessments were conducted within 5–12.5 months prior to or after the urinary iron excretion assessments. Ethical approval for this study was granted by the Faculty of Medicine, University of Indonesia prior to the start of the study.

<sup>16</sup>

### 2.1. Statistical analyses

The data analysis was conducted using SPSS version 21.0 for Windows. Normality test were conducted on existing data using Kolmogorov-Smirnov test. Relations of variables were evaluated by unpaired *t*-test, Pearson correlation test and Kruskal-Wallis test. A *p*-value of < 0.05 was considered significant.

### 3. Results

Demographics of the patients at time of their urinary iron excretion assessments are presented in Table 1. In summary, the patients were young (mean 12 years old), have been receiving blood transfusions for

approximately 10 years and ICT with DFP for approximately 7 years. In general, the patients had mild to severe iron load as measured by their serum ferritin, liver and pancreatic T2\* MRI values as presented in Table 2. Only 3 patients (5.5%) had mild excessive iron in their heart. Conversion of liver T2\* MRI value to LIC was done with formula presented by W<sup>15</sup> et al. [30] Statistical test shows a strong and significant correlation between the liver T2\* MRI and the converted LIC value ( $r = 0.737$ ,  $p < 0.001$ ). Median for LIC value in all of the samples were 10.79 (3.81–30.8) with no significant correlation between LIC and urinary iron ( $r = 0.012$ ,  $p = 0.791$ ).

<sup>34</sup>

There was a significant variation in urinary iron excretion based on the time of its assessment in relation to the time of the blood transfusions; urinary iron excretion was the highest immediately prior to the transfusion and the lowest between 2 and 7 days after transfusions (Figs. 1 and 2).

<sup>13</sup>

As presented in Fig. 3, there was a significant but low correlation between urinary iron excretion and serum ferritin ( $r = 0.291$ ,  $p = 0.03$ ) and no significant correlation with T2\* MRI results of the liver, heart or pancreas (Fig. 5). The greatest correlation was with transferrin saturation ( $r = 0.552$ ,  $p = 0.001$ ) (Fig. 4).

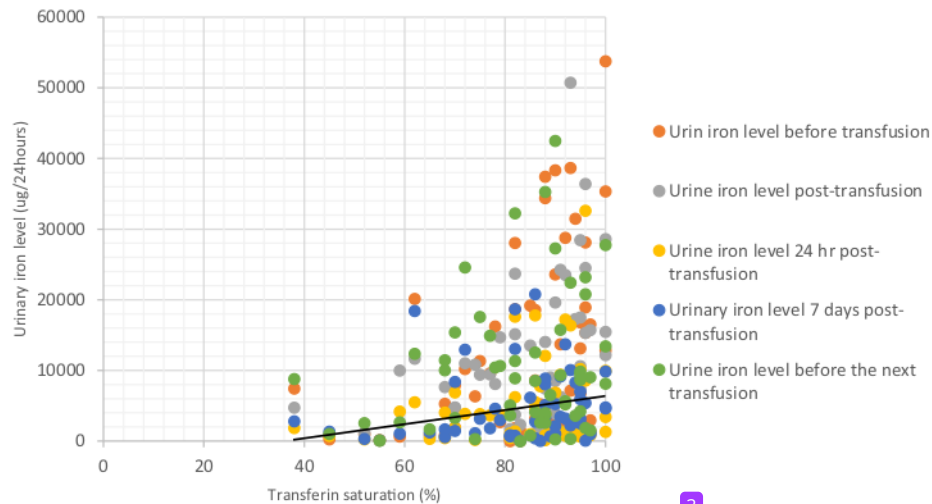


Fig. 4. Correlations between urinary iron excretion and transferrin saturation ( $r = 0.552$ ,  $p = 0.001$ ). <sup>3</sup>

#### 4. Discussion

This study uses urinary iron excretion to determine the efficacy of DFP in removing iron. It has shown that there is more iron excretion just before transfusion and that if the DFP was only excreted in the urine, all patients would be in positive iron balance. There was no significant correlation with the degree of iron load as determined by other iron overload measurements.

Most of subjects (50.9%) were well nourished, 40% subjects were under-nourished and 9.1% subjects were malnourished even though no subject shows any clinical signs of malnutrition. There was no significant relation between nutritional status and transferrin saturation ( $p = 0.053$ ) but post-hoc test showed significant relation of transferrin saturation between subjects with good nutrition and subjects with malnutrition ( $p = 0.034$ ). This differences could be caused by lower protein levels in patients with malnutrition [11,12].

Mean serum ferritin in this study was 3858 (270–9667) ng/mL. Since most of the patients had a high serum ferritin level, it indicated that poor acceptance of ICT and lack of availability of iron chelators because of cost restraints remain the greatest obstacle to iron control. Serum ferritin levels > 2500 ng/mL has been suggested as a risk factor associated with an increased risk of heart disease, liver cirrhosis, impaired growth and delayed puberty [13,14]. In this study, 30 (55%) subjects were found to experience a reduction in urinary iron excretion immediately after transfusion which then increased before the next transfusion (Figs. 1 and 2). This fits in with the concept that in transfused patients with reduced erythropoiesis and iron load, the daily breakdown of red cells results in 20 mg of iron that cannot be reused. With the case of urinary iron and pancreatic iron overload – higher urinary irons mean there are more iron being excreted thus leaving none deposited on the organs (represented by the facts that there are no heavy iron loads in pancreatic T2\* MRI).

As a patient becomes more anemic, the erythroferrone is increased and this suppresses hepcidin production that allows iron release from macrophages and possibly more gastrointestinal iron absorption. This results in more free iron in the circulation, explaining the high iron excretion before transfusion [15,16]. This, in conjunction with the mechanism of ICT, especially DFP which binds free iron and removes it mostly through the urine [17–19] results in higher pretransfusion excretion [27]. This result is similar to the study by Pippard which showed that urinary iron excretion reaches its peak at the lowest

her <sup>24</sup>obin levels [7].

There is a correlation between the urinary iron excretion to the serum ferritin ( $p = 0.031$ ,  $r = 0.291$ ) and transferrin saturation ( $r = 0.552$ ,  $p = 0.001$ ) in this study. This condition mirrored other studies and it might be related to the fact that urinary iron excretion can increase when the amount of labile iron in the body increases, represented by an increase in serum ferritin or transferrin saturation [20,21,28]. Our patients generally preferred DFP compared to DFO due to its oral administration. Both its acceptability and better efficacy in removing cardiac iron can explain the reason for the low incidence of excess cardiac iron among our patients [22–24]. Other explanation regarding the lack of cardiac iron in this cohort can also be explained with the low ratio of transfusional iron to bone marrow activity. Patients in this study have low pre-transfusion hemoglobin levels which means that there is significant erythropoiesis and only modest iron burdens from transfusion. Patients in this study are also quite young and the amount of transfusion they received throughout the years may not be sufficient for significant cardiac iron loading [29].

An important aspect that can be considered from these results is the good compliance with the ICT received by the subjects. Where necessary, modifications of either the dose, or the combination they were receiving were made in accordance to that which would best suit the subjects. There was no significant correlation between urinary iron excretion and T2\* MRI results of heart, liver or pancreas [25,26]. The limitations of this study are the fact that we did not account for the amount of iron excretion of DFP from feces. This varies between patients and within the same patient. To know really how much is excreted requires full balance studies. These are not feasible because it requires careful diet and collection of urine and feces. The process of 24 hour urine and feces collection also pose numerous challenges due to the countless factors that will affect the amount of iron being excreted. Though numerous studies had also mentioned how unreliable iron excretion measurement from urine and feces is, this method might still show a little glimpse on how iron is being excreted from the body.

#### 5. Conclusions

Urinary iron excretion, on subjects using DFP, had a correlation with time of transfusion (level of hemoglobin), serum ferritin and transferrin saturation. All subjects had positive iron balance, if urinary excretion alone were considered.



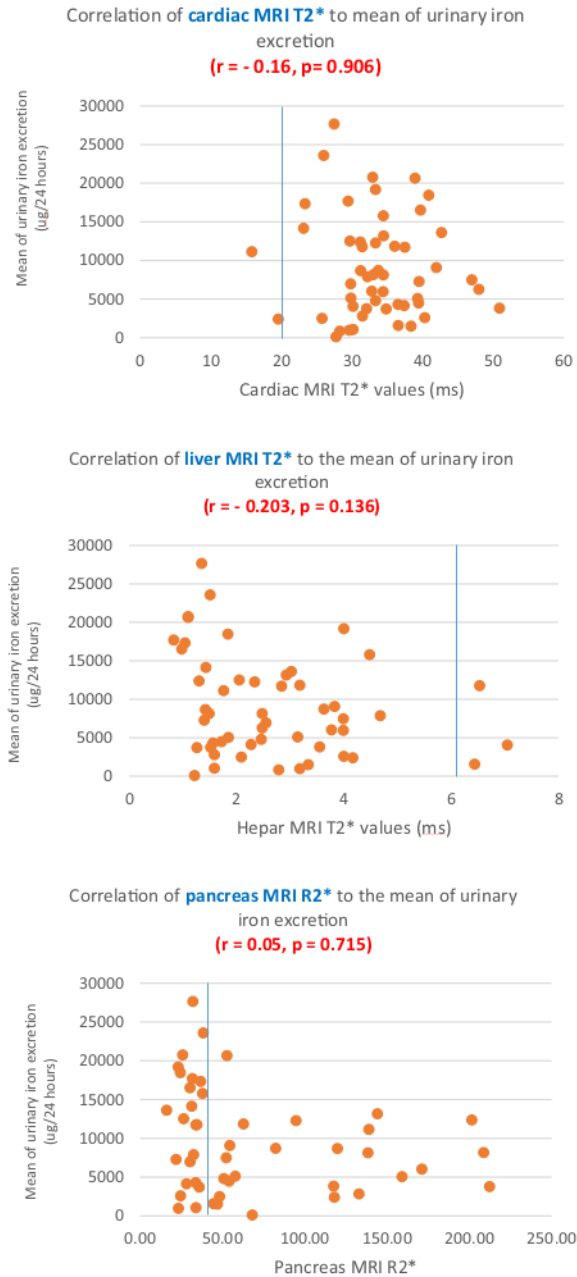


Fig. 5. Correlation between T2\* MRI results and urinary iron excretion.

References

[1] Department of Health Research and Development, Report of Basic Health Research, Ministry of Health Republic of Indonesia, Indonesia, 2009.  
 [2] Thalassemia Center of Dr. Cipto Mangunkusumo General Hospital, Indonesia, October 2016.  
 [3] J.C. Wood, Use of magnetic resonance imaging to monitor iron overload, *Hematol.*

*Oncol. Clin. North Am.* 28 (2014) 747–764.  
 [4] Thalassemia International Federation, Guidelines for the Clinical Management of Thalassemia, Thalassemia International Federation, Athens, 2014.  
 [5] I.O. Yuksel, E. Koklu, E. Kurtoqlu, S. Arslan, G. Cagirci, V. Karakus, et al., The association between serum ferritin level, tissue Doppler echocardiography, cardiac T2\* MRI, and heart rate recovery in patients with beta thalassemia major, *Acta Cardiol. Sin.* 32 (2016) 231–238.  
 [6] Z. Majd, S. Haqhpahan, G.H. Ajami, S. Matin, H. Namazi, M. Bardestani, Serum ferritin levels correlation with heart and liver MRI and LIC in patients with transfusion dependent thalassemia, *Iran Red Crescent Med J* 17 (2015) 1–4.  
 [7] M.J. Pippard, S.T. Callender, C.A. Finch, Ferrioxamine excretion in iron-loaded man, *Blood* 60 (1982) 288–294.  
 [8] R. Seshadri, J.H. Colebatch, R. Fisher, Urinary iron excretion in thalassaemia after desferrioxamine administration, *Arch. Dis. Child.* 49 (1974) 195–199.  
 [9] A.P. Dubey, S. Kumar, P. Choudhury, B. Talukdar, R.K. Pari, Desferrioxamine induced urinary iron excretion in thalassemia, *Indian Pediatr.* 289 (1992) 775–778.  
 [10] E.B. Neto, L.F. Marcopito, M.A. Zago, Urinary iron excretion induced by intravenous infusion of deferoxamine in B thalassemia homozygous patients, *Braz. J. Med. Biol. Res.* 35 (2002) 1319–1328.  
 [11] K. Sigh, S. Agarwal, S. Gupta, Low bone mineral density in thalassemia major: Sanjay Gandhi Post Graduate Institute experience and a brief focus on underlying factors behind the cause, *Thalassemia Rep.* 4 (2014) 16–18.  
 [12] D. Rund, Thalassemia 2016: modern medicine battles an ancient disease, *Am. J. Hematol.* 91 (2016) 15–21.  
 [13] C.N. Kontoghiorghis, G.J. Kontoghiorghis, New developments and controversies in iron metabolism and iron chelation therapy, *World J. Methodol.* 6 (2016) 1–19.  
 [14] E. Poggiali, E. Cassinero, L. Zanaboni, M.D. Cappellini, An update on iron chelation therapy, *Blood Transfus.* 10 (2012) 411–422.  
 [15] S. Gardenghi, M.F. Marongiu, P. Ramos, E. Guy, L. Breda, A. Chadburn, et al., Ineffective erythropoiesis in beta-thalassemia is characterized by increased iron absorption mediated by downregulation of hepcidin and up-regulation of ferroportin, *Blood* 109 (2007) 5027–5035.  
 [16] T. Tanno, J.L. Miller, Iron loading and overloading due to ineffective erythropoiesis, *Adv. Hematol.* 283 (2010) 1–8.  
 [17] G.C. Del Vecchio, E. Crollo, F. Schettini, R. Fischer, D.D. Mattia, Factor influencing effectiveness of deferoxamine in a thalassemia major clinical setting, *Acta Haematol.* 104 (2000) 99–102.  
 [18] S.A. Fisher, S.J. Brunskill, C. Doree, O. Chowdhury, S. Gooding, D.J. Roberts, Oral deferoxamine for iron chelation in people with thalassaemia (review), *Cochrane Syst. Rev.* 8 (2013) 1–134.  
 [19] F.F. Fassos, J. Klein, D. Fernandes, D. Matsui, N.F. Olivieri, G. Koren, The pharmacokinetics and pharmacodynamics of the oral iron chelator deferoxamine (LI) in relation to hemoglobin levels, *Int. J. Clin. Pharmacol. Ther.* 34 (1996) 288–292.  
 [20] W. Breuer, H. Ghoni, A. Shattat, A. Goldfarb, A. Koren, C. Levin, et al., Non-transferrin bound iron in thalassemia: differential detection of redox active forms in children and older patients, *Am. J. Hematol.* 87 (2012) 55–61.  
 [21] F.N. Al-Refaie, C.E. De Silva, B. Wonke, A.V. Hoffbrand, Changes in transferrin saturation after treatment with the oral iron chelator deferoxamine in patients with iron overload, *J. Clin. Pathol.* 48 (1995) 110–114.  
 [22] D. Hemando, Y.S. Levir, C.B. Birlin, S.B. Reeder, Quantification of liver iron with MRI: state of the art and remaining challenges, *J. Magn. Reson. Imaging* 40 (2014) 1003–1021.  
 [23] Jensen J.H. Tang Haiying, C.L. Sammet, S. Sheth, S.V. Swaminathan, K. Hultman, Magnetic resonance characterization of hepatic storage iron in transfusional iron overload, *J. Magn. Reson. Imaging* 39 (2014) 307–316.  
 [24] B. Gianesin, D. Zefiro, M. Musso, A. Rosa, C. Bruzzone, M. Balocco, Measurement of liver iron overload: noninvasive calibration of MRI-R2\* by magnetic iron detector susceptometer, *Magn. Reson. Med.* 67 (2012) 1782–1786.  
 [25] A. Chuansumrit, J. Laothamathat, N. Sirachainan, W. Sungkarat, P. Wongwerawattanakoon, P. Kumkrua, Correlation between liver iron concentration determined by magnetic resonance imaging and serum ferritin in adolescents with thalassaemia disease, *Paediatr. Int. Child Health* 29 (2016) 1–6.  
 [26] A. Azarkeivan, M. Hashemieh, A. Shirkevand, K. Sheibani, Correlation between heart, liver, and pancreas hemosiderosis measured by MRI T2\* among thalassemia major patients from Iran, *Arch. Iran. Med.* 19 (2016) 96–100.  
 [27] P. Pootrakul, W. Breuer, M. Sametband, P. Sirankaprascha, C. Hershko, Z.I. Cabantchik, Labile plasma iron (LPI) as an indicator of chelatable plasma redox activity in iron-overloaded  $\beta$ -thalassaemia/HbE patients treated with an oral chelator, *Blood* 104 (5) (2004) 1504–1510 Sep 1.  
 [28] A. Piga, F. Longo, L. Duca, S. Roggero, T. Vinciguerra, R. Calabrese, C. Hershko, M.D. Cappellini, High nontransferrin bound iron levels and heart disease in thalassaemia major, *Am. J. Hematol.* 84 (1) (2009) 29–33 Jan.  
 [29] M.W. Garbowski, P. Evans, E. Vlachodimitropoulou, R. Hider, J.B. Porter, Residual erythropoiesis protects against myocardial hemosiderosis in transfusion-dependent thalassemia by lowering labile plasma iron via transient generation of apo-transferrin, *Haematologica* 102 (10) (2017 Oct 1) 1640–1649.  
 [30] J.C. Wood, C. Enriquez, N. Ghugre, J.M. Tyzka, S. Carson, M.D. Nelson, T.D.M.R.I. Coates, R2 and R2\* mapping accurately estimates hepatic iron concentration in transfusion-dependent thalassemia and sickle cell disease patients, *Blood* 106 (4) (2005 Aug 15) 1460–1465.

# Urinary iron

---

## ORIGINALITY REPORT

---

19%

SIMILARITY INDEX

15%

INTERNET SOURCES

11%

PUBLICATIONS

4%

STUDENT PAPERS

---

## PRIMARY SOURCES

---

1	<a href="http://www.siftdesk.org">www.siftdesk.org</a> Internet Source	2%
2	<a href="http://nova.newcastle.edu.au">nova.newcastle.edu.au</a> Internet Source	2%
3	<a href="http://siskadawango.blogspot.com">siskadawango.blogspot.com</a> Internet Source	2%
4	<a href="http://coek.info">coek.info</a> Internet Source	1%
5	<a href="http://ijbc.ir">ijbc.ir</a> Internet Source	1%
6	<a href="http://www.science.gov">www.science.gov</a> Internet Source	1%
7	<a href="http://www.karger.com">www.karger.com</a> Internet Source	1%
8	Yoshio Sumida. "Hepatic iron accumulation may be associated with insulin resistance in patients with chronic hepatitis C", <i>Hepatology Research</i> , 6/30/2007 Publication	<1%

---

9

Submitted to University of Hong Kong

Student Paper

&lt;1 %

10

Varun Bafna, Sunil Bhat, Vimal Raj, Shobha Badiger, Vellaichamy Muthupandi Annapandian, K. S. Nataraj, Sharat Damodar. "Quantification of Liver Iron Overload: Correlation of MRI and Liver Tissue Biopsy in Pediatric Thalassemia Major Patients Undergoing Bone Marrow Transplant", Indian Journal of Hematology and Blood Transfusion, 2020

Publication

&lt;1 %

11

[papers.ssrn.com](https://papers.ssrn.com)

Internet Source

&lt;1 %

12

[www.cambridge.org](https://www.cambridge.org)

Internet Source

&lt;1 %

13

[worldwidescience.org](https://worldwidescience.org)

Internet Source

&lt;1 %

14

[journals.lww.com](https://journals.lww.com)

Internet Source

&lt;1 %

15

[omjournal.org](https://omjournal.org)

Internet Source

&lt;1 %

16

[www.frontiersin.org](https://www.frontiersin.org)

Internet Source

&lt;1 %



17

Kim, Il-Hwan, Joon-Ho Moon, Sung-Nam Lim, Sang-Kyun Sohn, Hoon-Gu Kim, Gyeong-Won Lee, Yang-Soo Kim, Ho-Sup Lee, Ki-Young Kwon, Sung-Hyun Kim, Kyung-Tae Park, Joo-Seop Chung, Won-Sik Lee, Sang-Min Lee, Myung-Soo Hyun, Hawk Kim, Hun-Mo Ryoo, Sung-Hwa Bae, and Young-Don Joo. "Efficacy and safety of deferasirox estimated by serum ferritin and labile plasma iron levels in patients with aplastic anemia, myelodysplastic syndrome, or acute myeloid leukemia with transfusional iron overload : Efficacy of DFX Estimated by Serum Ferritin and LPI", *Transfusion*, 2015.

Publication

&lt;1 %

18

[qspace.qu.edu.qa](http://qspace.qu.edu.qa)

Internet Source

&lt;1 %

19

Takayuki Kondo, Hitoshi Maruyama, Soichiro Kiyono, Tadashi Sekimoto et al. "Eradication of esophageal varices by sclerotherapy combined with argon plasma coagulation: Effect of portal hemodynamics and longitudinal clinical course", *Digestive Endoscopy*, 2015

Publication

&lt;1 %

20

Submitted to University of Southampton

Student Paper

&lt;1 %

- 
- 21 [discovery.ucl.ac.uk](http://discovery.ucl.ac.uk)  
Internet Source <1 %
- 
- 22 [preprints.jmir.org](http://preprints.jmir.org)  
Internet Source <1 %
- 
- 23 [www.yumpu.com](http://www.yumpu.com)  
Internet Source <1 %
- 
- 24 Chaim Hershko. "Iron chelators in medicine",  
Molecular Aspects of Medicine, 1992  
Publication <1 %
- 
- 25 Lynne Mcnamara. "Non-transferrin-bound  
iron and hepatic dysfunction in African dietary  
iron overload", Journal of Gastroenterology  
and Hepatology, 2/1999  
Publication <1 %
- 
- 26 Shander, Aryeh, Ulrike Berth, Joanne Betta,  
and Mazyar Javidroozi. "Iron overload and  
toxicity: implications for anesthesiologists",  
Journal of Clinical Anesthesia, 2012.  
Publication <1 %
- 
- 27 Sunil K. Nadar, Shahina Daar, Wael A.  
Abdelmottaleb, Muhammad M. Shaikh et al.  
"Abnormal diastolic function and Global  
longitudinal strain in patients with  
Thalassemia Major on long term chelation  
therapy", The International Journal of  
Cardiovascular Imaging, 2020  
Publication <1 %
-

28

[haematologica.org](http://haematologica.org)

Internet Source

&lt;1 %

29

[lib.bioinfo.pl](http://lib.bioinfo.pl)

Internet Source

&lt;1 %

30

[www.scielo.br](http://www.scielo.br)

Internet Source

&lt;1 %

31

Mehran Karimi, Fatemeh Amirmoezi, Sezaneh Haghpanah, Seyedpouria Ostad, Mehrzad Lotfi, Sepideh Sefidbakht, Shahed Rezaian. "Correlation of serum ferritin levels with hepatic MRI T2 and liver iron concentration in nontransfusion beta-thalassemia intermediate patients: A contemporary issue", *Pediatric Hematology and Oncology*, 2017

Publication

&lt;1 %

32

Arwa Khaled, Dina A. Ezzat, Hoda A Salem, Hadeel M Seif, Hoda Rabee. "

Effective method of evaluating myocardial iron concentration in pediatric patients with thalassemia major

", *Journal of Blood Medicine*, 2019

Publication

&lt;1 %

33

Chiaki Tanaka. "Clinical Pharmacology of Deferasirox", *Clinical Pharmacokinetics*, 2014

Publication

&lt;1 %

34

Fisher, Sheila A, Susan J Brunskill, Carolyn Doree, Onima Chowdhury, Sarah Gooding, David J Roberts, and David J Roberts. "Oral deferiprone for iron chelation in people with thalassaemia", Cochrane Database of Systematic Reviews Reviews, 2013.

Publication

<1 %

35

Vasili Berdoukas, Farmaki, Carson, Wood, Coates. "Treating thalassemia major-related iron overload: the role of deferiprone", Journal of Blood Medicine, 2012

Publication

<1 %

Exclude quotes On

Exclude matches Off

Exclude bibliography On